

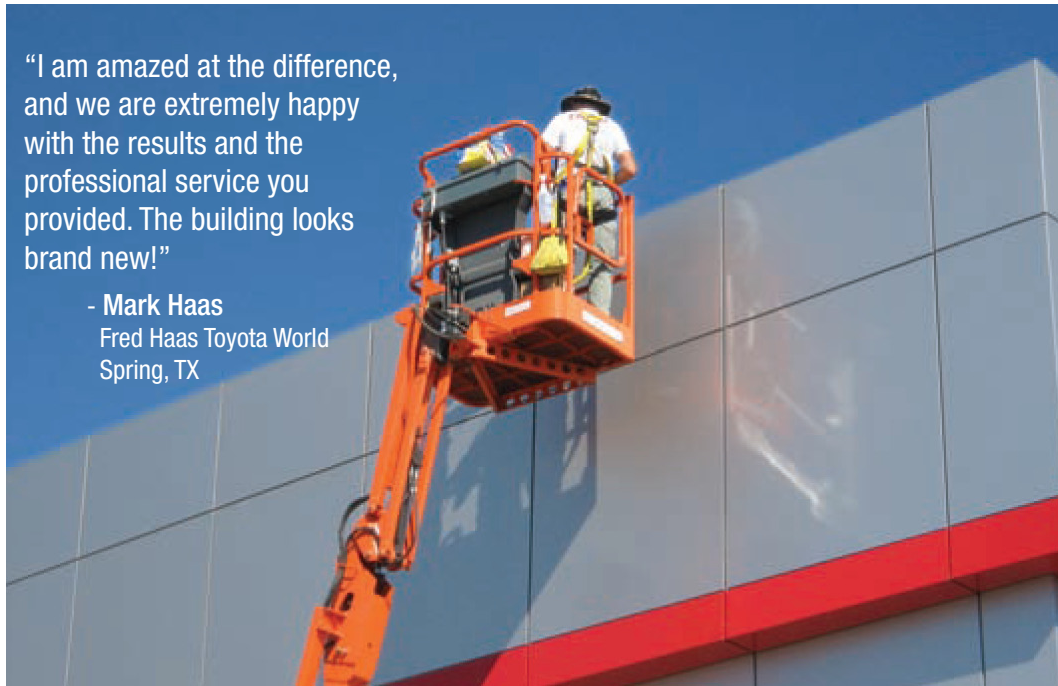
### Services Overview:

- Our crews are specially trained ACM and glass cleaning service providers.
- We use special ACM manufacturer recommended cleaning solutions and spotless rinse techniques.
- It takes approximately 30 hours to clean your building. This will be scheduled at your convenience. There is no disruption to your daily business functions.
- Common ladders will damage your ACM. Instead, we use construction booms and lifts to reach your buildings highest points.
- We provide and maintain detailed inspection reports of your buildings portal and exterior condition for warranty use. We automatically notify related vendors regarding required warranty repairs.



“I am amazed at the difference, and we are extremely happy with the results and the professional service you provided. The building looks brand new!”

- Mark Haas  
Fred Haas Toyota World  
Spring, TX



## WHEN IT COMES TO A PROFESSIONAL IMAGE, EVERY DETAIL COUNTS.

### Preserve Your Investment

Your ACM panels are the largest investment in your building's construction project. Make sure you are protecting that investment by properly maintaining the finish for years to come.

### Proper Cleaning & Maintenance

A customer's experience begins with the perception of your dealership so make sure their first impression is positive every time. Ensure your building remains as stunning as the day your ACM panels were installed by utilizing the Maintenance Services of RGI Image.



“I cannot believe how much it “glows” and never realized how dirty the building really was!”

- Kenny Glasco  
Olathe Toyota  
Olathe, KS

## Expertise

RGI Image technicians are experts in maintaining ACM. All cleaning is conducted using AAMA (American Architectural Manufacturers Association) standards, the national standard for ACM products. Many outside companies are not trained to clean ACM panels. Using the wrong soap or chemicals can easily cause permanent damage to the panels’ unique painted finish, which is why RGI Image only uses approved cleaning solutions and methods.

## Convenience

RGI Image’s Maintenance Program is an ongoing process that we schedule and monitor so you don’t have to worry about it. As part of this program, RGI Image will:

- Work around your daily operations to ensure minimal disruption to your business.
- Provide a detailed Inspection Report after each service.
- Provide regular updates and an ongoing schedule as to when maintenance is needed so you don’t have to think about it.

Maintenance frequency depends on your dealership location. Industrial, high-traffic or coastal environments may require more frequent maintenance. In addition, we use non-toxic, biodegradable, water-soluble cleaning solutions that leave your building spotless without endangering the environment.



724 N 109TH CT. OMAHA, NE 68154  
P:402.496.0030 F:402.493.5934

[www.RGIimage.com](http://www.RGIimage.com)